

*Ford* RANGER





# THE SIMPLE WAY TO DRIVE A NEW FORD RANGER

**1** EXPLORE

**2** SELECT

**3** CUSTOMISE

*Ranger Wildtrak Double Cab in Sabre Orange metallic body colour with 18" Medium Bolder Grey alloy wheels.*







# 1 EXPLORE

## YOUR CAPABLE PARTNER

The Ford Ranger is the pick-up truck that will help you tackle any challenge head on. Boasting more technology than ever before, outstanding interior comfort and a range of smart driver assistance and safety features, it's the only truck with enough drive to match your own.

Vehicle shown features accessories, available at extra cost.

*Model shown is a Double Cab Wildtrak in Moondust Silver metallic body colour with Load box bedliner.*









## READY FOR THE CHALLENGE

If you want a job done right, let the Ford Ranger do it. Offering an outstanding combination of four-wheel drive capability, impressive power and traction, partnered with up to 3,500 kg maximum towing capacity\*, the Ranger is so capable you'll have to remind yourself that you are actually pulling a fully laden trailer. The vehicle also has exceptional wading capability and is designed to drive through water up to 800 mm deep.

**Note** Always consult the Owner's Manual before off-road driving. Follow all laws and drive on designated off-road trails and recreation areas. Care is required when driving through water and speed levels must be reduced accordingly. When a trailer is attached, it is important that it has adequate mass to ensure road traction on all wheels.

\*Maximum towing varies based on cargo, vehicle configuration, accessories and number of passengers.

\*\*Try to avoid water higher than the bottom of the hubs and proceed slowly. Refer to your Owner's Manual for detailed information regarding driving through water.

Vehicle shown features accessories, available at extra cost.

*Ranger XLT Double Cab in Blue Lightning metallic body colour with 17" Panther Black cast alloy painted sport wheels.*











## 1 EXPLORE

# RAPTOR, THE ULTIMATE RANGER

The sensational Ford Ranger Raptor is the toughest and highest performing Ranger ever. Developed by Ford Performance for the true off-road enthusiast, it combines rugged performance with confident, surefooted capability.

Ranger Raptor is powered by the 2.0L Ford EcoBlue diesel engine. Developing 213 PS (157 kW) and a mighty 500 Nm of torque, it drives Raptor's four-wheel drive system via a 10-speed automatic transmission to get you in the right gear at the right time.

Built to withstand high-impact off-road events, its unique, super-strong reinforced chassis frame uses high-strength, low-alloy steel to endure the rigours delivered by the most challenging environment.

Race-bred off-road FOX Pro suspension\* is designed to tackle fearsome terrain with ease, smoothing out bumps and ruts while leaving you in complete control and comfort.

\*Available on Raptor only

*Ranger Raptor Double Cab in Ford Performance Blue metallic body colour with 17" Dyno Grey alloy wheels.*







**1 EXPLORE**

## TAKE CONTROL

The Ranger Raptor interior offers a powerful fusion of sportiness and top-level comfort, putting you firmly in control.

The bolstered front sports seats are specially designed for off-road support, with technical-suede materials for enhanced grip. Exclusive blue stitching and leather accents feature throughout. Even the perforated leather steering wheel is specially designed with an on-centre marker and Raptor logo, and is equipped with racing-style magnesium paddle shifters for manual gear selection override.

Ranger Raptor also features a Terrain Management System with six selectable drive modes that allow you to optimise its performance on a wide range of terrain and driving conditions.

From now on, you will view every road and every drive from an entirely new perspective.

*Ranger Raptor Double Cab with Soho Grain Premium Leather and automatic transmission.*













## 1 EXPLORE

# WHEREVER THE ROAD TAKES YOU

Ford Ranger has a long-established reputation as one of the most capable pick-ups. With its four-wheel drive system with Roll Stability Control and Traction Control – in addition to an electronic locking rear differential\* – the versatile and sure-footed Ranger is perfect for a tough week at work, followed by an adventurous weekend off-road†.



### 10-speed automatic transmission

10-speed automatic transmission ensures you are always in the right gear. (On both Raptor and Limited, with the 213PS Ford EcoBlue engine)



### Hill Start Assist<sup>②)</sup>

Designed to temporarily prevent you from rolling down a slope when you move your foot from the brake pedal to the accelerator pedal. It works in forward and reverse gears, and can be used when towing and pulling loads.

\*Available on Raptor only.

②Uses sensors. ②Driver Assistance feature.

**Note** Driver-assist features are supplemental and do not replace the driver's attention, judgement and need to control the vehicle.

Vehicle shown features accessories, available at extra cost.

*Ranger Wildtrak Double Cab in Moondust Silver metallic body colour with 18" Bolder Grey alloy wheels.*





| SYNC



## MEET YOUR PHONE'S NEW BEST FRIEND

### FORD SYNC 3

Ford SYNC 3 integrates seamlessly with your compatible smartphone, letting you control everything from phone calls and text messaging to music and satellite navigation – all via the 8" touchscreen or through remarkably simple voice commands. Map updates help to keep you on track and on time, and are complimentary for a limited period following vehicle registration.

### SYNC 3 FEATURES

- Manage your phone, music, apps and navigation with simple voice commands
- Hear your text messages read aloud for you
- Emergency Assistance<sup>†</sup> helps occupants place an emergency call for emergency services
- Control SYNC-compatible apps via Apple CarPlay and Android
- Navigate your smartphone through the SYNC 3 home screen, as if it were your handset
- Colour touchscreen supports multi-touch 'swipe' and 'pinch-to-zoom' movements, and lets you arrange application icons and background displays, just as you would on your tablet or smartphone

**Please note:** Full SYNC 3 smartphone integration only available with iPhone 5/Android 5.0 (Lollipop) or higher. Some SYNC 3 functions require a data connection, so mobile data charges will apply.

<sup>†</sup>Ford Emergency Assistance is an innovative SYNC feature that uses a Bluetooth<sup>®</sup>-paired and connected mobile phone to help vehicle occupants initiate a call to the local Communications Centre, following a vehicle crash event involving an airbag deployment or fuel pump shut off. The feature operates in more than 40 European countries and regions.



## 1 EXPLORE

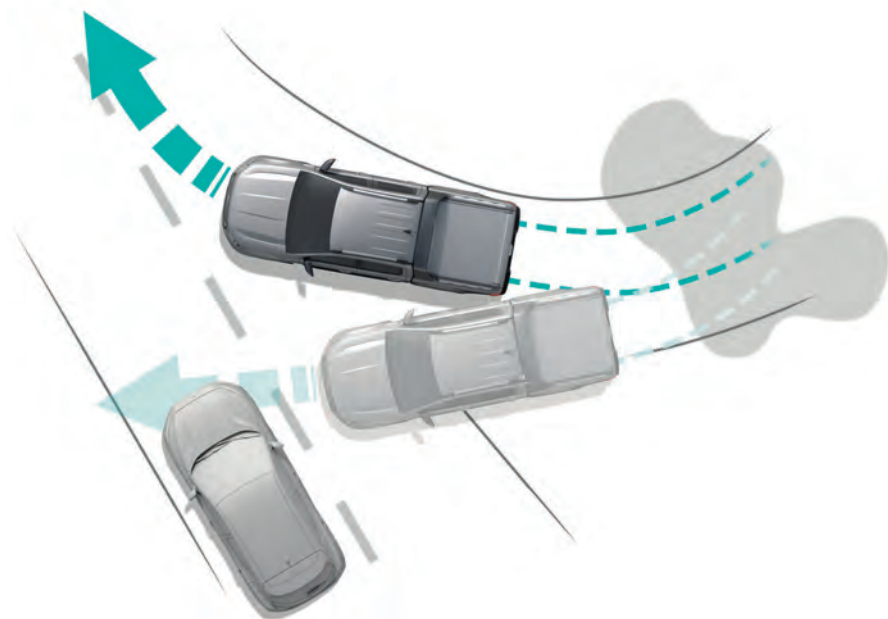
### PRE-COLLISION ASSIST<sup>02)</sup> AND ACTIVE BRAKING<sup>02)</sup>

Pre-Collision Assist is designed to monitor your proximity to other vehicles – even in the dark – and can alert you to a potential collision. If you don't respond to the system's warning signals, Active Braking pre-charges the braking system for enhanced effectiveness when you brake. If the system determines a collision may occur, Active Braking is designed to automatically apply the brakes to help reduce the impact of frontal collisions.



### ELECTRONIC STABILITY CONTROL (ESC)<sup>01)</sup>

Senses when you are deviating from your chosen line and aims to keep you on track by automatically regulating braking and engine output. Traction Control<sup>01)</sup> is designed to reduce excessive wheelspin and improves grip by constantly monitoring and adjusting the torque delivered to individual wheels.



<sup>02)</sup>Uses sensors.

<sup>01)</sup>Safety feature.

<sup>02)</sup>Driver Assistance feature.

**Note** Driver-assist features are supplemental and do not replace the driver's attention, judgement and need to control the vehicle.

Remember that even advanced technology cannot overcome the laws of physics. It's always possible to lose control of a vehicle due to inappropriate driver input for the conditions.

*Top and bottom: Ranger Wildtrak Double Cab in Moondust Silver metallic body colour with 17" Bright Polished Silver alloy wheels.*



## 1 EXPLORE

### DUAL-ZONE ELECTRONIC AUTOMATIC TEMPERATURE CONTROL (DEATC) AIR CONDITIONING

Ranger's DEATC air conditioning system can be adjusted separately for the driver and front passenger, with up to 4°C variation from side to side.



### FORD POWER STARTER BUTTON

The Ford KeyFree System allows you to lock and unlock the doors and tailgate, and start the engine without having to get the keys out of your pocket or bag. The passive sensor inside the car can detect you approaching from a 1.2-metre radius.



<sup>1</sup>Uses sensors.

<sup>2</sup>Driver Assistance feature.

**Note** Driver-assist features are supplemental and do not replace the driver's attention, judgement and need to control the vehicle.



# 2

**SELECT**

## Limited

### Key exterior features

- 17" Black alloy wheels
- Keyless entry
- Rear-view camera
- Rear parking sensors
- Bi-xenon headlights with LED daytime running lights
- Electrically-operated and heated power-foldable door mirrors with puddle lights
- Chrome tubular sports bar
- Rear privacy glass
- EasyLift tailgate

### Key interior features

- Ford Power starter button
- SYNC 3 with 8" Touchscreen, Apple Carplay
- 8-way power adjustable and heated driver's seat with lumbar support
- Leather interior
- Power converter
- Cool Box in centre console

### Bodystyles

Double Cab 4x4

### Engines

#### Diesel

2.0L EcoBlue 213 PS (157 kW)









# 2

**SELECT**

## Raptor

### Key exterior features

- Unique 17" alloy wheels with all-terrain tyres
- Unique Raptor front grille
- Widened front and rear wheel arches with 150 mm wider track
- Aerodynamic sports hoop with integrated loadbox illumination
- Unique front and rear bumpers
- Front aluminium skid plate
- FOX Pro shock absorbers with position sensitive damping

### Key interior features

- Unique Raptor suede trim with heated and power-adjustable seats
- Unique perforated leather sports steering wheel with centre marker and Raptor logo
- Unique instrument panel cluster
- Terrain Management System with six selectable drive modes
- SYNC 3 with 8" Touchscreen and Navigation

### Bodystyle

Double Cab 4x4

### Engine

#### Diesel

2.0L EcoBlue 213 PS (157 kW)









# 3

## CUSTOMISE

Choose your body colour, wheels, options and extras, and make Ford Ranger unmistakably yours.

## LIFE IN GLORIOUS COLOUR

Ford Ranger owes its beautiful and durable exterior to a special multi-stage painting process. From the wax-injected steel body sections to the protective top coat, new materials and application processes ensure your Ranger will retain its good looks for many years to come.



**Note** The images used are to illustrate body colours only and may not reflect the vehicle described. Colours and trims reproduced within this brochure may vary from the actual colours, due to the limitations of the printing processes used.

**Performance Blue**  
Metallic body colour



## BODY COLOURS



**Frozen White**  
Solid body colour



**Race Red**  
Solid body colour



**Agate Black**  
Metallic body colour



**Blue Lightning**  
Metallic body colour  
(Limited only)



**Diffused Silver**  
Metallic body colour  
(Limited only)



**Moondust Silver**  
Metallic body colour  
(Limited only)



**Sea Grey**  
Metallic body colour  
(Limited only)



**Conquer Grey**  
Metallic body colour  
(Raptor only)



**Performance Blue**  
Metallic body colour  
(Raptor only)

### 12-year perforation warranty

The Ford Ranger owes its durable exterior to a thorough multi-stage painting process. From the wax-injected steel body sections to the hard-wearing top coat, new materials and application processes ensure it will retain its good looks for many years to come.

Zinc coating

Phosphate coat

Electrocoat

Primer

Top coat

Clearcoat





[WWW.FORD-HK.COM](http://WWW.FORD-HK.COM)



All details and specifications of the vehicles and their options shown on the pages of this catalogue are for reference only and may vary according to locale.  
Due to printing process, the colours of the bodies and interiors may differ slightly from the actual colours. Please consult our Sales Representatives for exact information.  
Venture Motors Limited reserves the right to change specifications and equipment without prior notice.

